

Installation and Maintenance Manual Long Range IoT Station (Lora Station) (868MHz version)

	Author	Approved by	Validated by
Name	Lénaïc Louvel	Marie Le Berre	Yannick Delibie
Entity			
Initial	LLO	MLB	YDE
Date	02/06/2014	xx/xx/2014	
Visa			

Destination List

Name	Company / Service	Place	Commentry

Document history

Version	Modification	Author	Date
V0.1	Preliminary version	LLO	27/01/2014
V0.2	Adding of some precisions on the following contents: <ul style="list-style-type: none"> • Internet cabling and cable type • Cable gland dimensions • Auxiliary power supply • GPS and GSM considerations 	SNI	06/05/2014
V0.3	Safety recommendations adding	SNI	02/06/2014

Classification level	1 - Internal use only	2 – Confidential	3 - Confidentiallimited
-----------------------------	-----------------------	------------------	-------------------------

Contents

1	Open Issues	5
2	References	5
3	Glossary	5
4	Introduction	7
5	Description of the Long Range IoT Station	8
5.1	BLOCK DIAGRAM	8
5.2	MECHANICAL IMPLEMENTATION	9
5.3	STICKERS	11
6	Installation procedure	12
6.1	INSTALLATION TOPOLOGY	12
6.1.1	SINGLE STATION INSTALLATION	12
6.1.2	MULTI-STATION INSTALLATION	13
6.1.2.1	With SIM Subscription	13
6.1.2.2	Without SIM Subscription	14
6.2	ELECTRIC DISTRIBUTION TO THE LoRA IoT STATION	15
6.2.1	POWER-OVER-ETHERNET (POE) POWER SUPPLY	15
6.2.2	SOLAR POWER SUPPLY	16
6.3	MOUNTING OF THE ENCLOSURE	17
6.3.1	GPS AND GSM CONSIDERATIONS	17
6.3.2	GENERAL CONSIDERATIONS	17
6.3.3	POLE MOUNTING BY U-BOLT	17
6.3.4	WALL MOUNTING	18
6.3.5	METALLIC STRAPPING MOUNTING	19
6.4	SETTING CONNECTIONS	20
6.4.1	ETHERNET CONNECTION	20
6.4.2	LoRA RF ANTENNA CONNECTION	20
6.5	COMMISSIONING	22
6.5.1	SIM CARD	22
6.5.2	POWER ON	22
6.5.3	FUNCTIONAL CHECK	23
7	Maintenance of the Access point	24
7.1	SIMPLE CHECKS	24
7.1.1	LoRA IoT STATION ENCLOSURE	24
7.1.2	CABLES	24
7.1.3	LED	24
7.2	INTERFACES FOR DEBUG OR MAINTENANCE PURPOSES	24
7.2.1	PROPRIETARY DEBUG INTERFACE	24
7.2.2	USB AND ETHERNET INTERFACE	24
7.2.3	TEST AND RESET BUTTONS	25
8	Kerlink support	25

PRELIMINARY

Classification level	1 - Internal use only	2 – Confidential	3 - Confidential limited
This document is owned by KLK and can not be distributed, used and/or reproduced without KERLINK written authorization.			Page 3/25

Figures

Figure 1: LoRa Network topology	7
Figure 2: LoRa IoT Station Block diagram	8
Figure 3 : LoRa IoT Station casing - external view	9
Figure 4 : POE injector (example)	9
Figure 5 : LoRa IoT Station casing - internal view (temporary image)	10
Figure 6 : Mounting kit	11
Figure 7 : Single station installation (with SIM)	12
Figure 8 : Single station installation (No SIM).....	12
Figure 9 : Multi-station installation (with SIM).....	13
Figure 10 : Multi-station installation (No SIM)	14
Figure 11 : Ethernet connection (temporary image)	Erreur ! Signet non défini.
Figure 12 : DC power supply connection (temporary image)	16
Figure 13 : mounting kit dimensions	17
Figure 14 : Pole mount set on the enclosure.....	18
Figure 15 : Another view of the pole mounting using U-bolt (no pole represented)	18
Figure 16 : Wall mount on the enclosure (front side)	19
Figure 17 : Pole mount set using strapping	19
Figure 18 : Another view of the pole mounting using strapping (no pole represented)	20
Figure 19 : attachment of the antenna on the mounting set	20
Figure 20 : connection of LoRa RF antenna (bottom view)	21
Figure 21 : attachment of the RF antenna.....	21
Figure 22 : LEDs indicators	23
Figure 23 : Proprietary debug interface of the LoRa IoT Station	24
Figure 24 : USB connector of the LoRa IoT Station	25

 <p>Long Range IoT Station</p>	<p>Installation and Maintenance Manual</p>	<p>Reference:INSTALL_Long_Range_IoT_Station Version 0.3 Author Lénaïc Louvel Date 02/06/2014</p>
---	---	--

1 Open Issues

Reference	Status	Description
[1]		

2 References

Reference	Document/Link	Description
[1]		
[2]		
[3]		

3 Glossary

Keyword	Description
ADC	Analog to Digital Converter
AMR	Automatic Meter Reading
AP	Access Point
APC	Automated Power Control
API	Application Programming Interface
CAN	Control Area Network
CPU	Central Processing Unit
DAC	Digital to Analog Converter
DDRAM	Double Data Rate RAM
DHCP	Dynamic Host Configuration Protocol
DOTA	Download Over The Air
FTP	File Transfer Protocol
GPRS	General Packet Radio Service
GPS	Global Positioning System
GSM	Global System for Mobile communication
HTTP	HyperText Transfer Protocol
IK	Mechanical Impact
IO	In / Out
IP	Internet Protocol or Ingress Protection
KLK	Kerlink
KNET	Kerlink M2M network
LoRa	Long Range
M2M	Machine to Machine

Classification level	1 - Internal use only	2 – Confidential	3 - Confidential limited
This document is owned by KLK and can not be distributed, used and/or reproduced without KERLINK written authorization.			Page 5/25

MIPS	Millions of Instructions Per Second
NFS	Network File System
NMEA	National Marine Electronics Association
PCB	Printed Circuit Board
PU	Polyurethane
RAM	Random Access Memory
RF	Radio Frequency
RSSI	Received Signal Strength Indicator
SI	Système d'Information
SIM	Subscriber Identity Module
SMA	SubMiniature version A
SSH	Secure Shell
TBD	To Be Defined
TCP	Transmission Control Protocol
USB	Universal Serial Bus
UV	UltraViolet
WAN	Wide Area Network
WLAN	Wireless Local Area Network
VHF	Very High Frequency

PRELIMINARY

4 Introduction

The LoRaIoT Station is part of the global Long Range Radio fix network to provide M2M connectivity link between low power end-point and Internet Access.

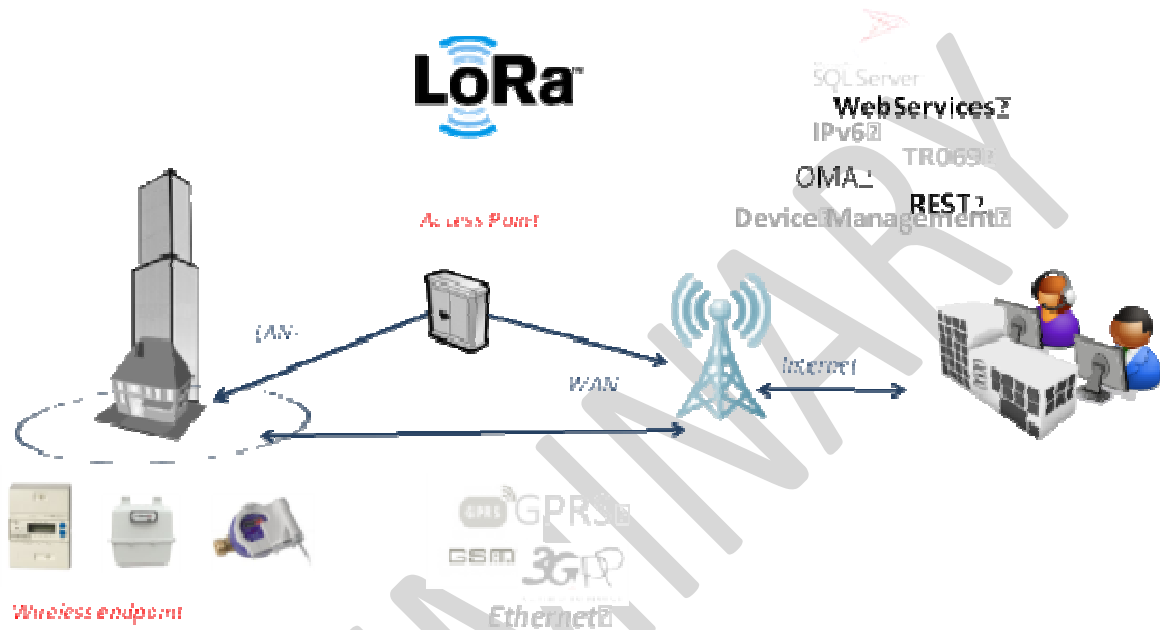


Figure 1: LoRa Network topology

The product is based on LoRa technology provided by Semtech Company.

Classification level	1 - Internal use only	2 – Confidential	3 - Confidential limited
This document is owned by KLK and can not be distributed, used and/or reproduced without KERLINK written authorization.			Page 7/25

5 Description of the Long Range IoT Station

5.1 Block Diagram

The following figure describes the functional architecture:

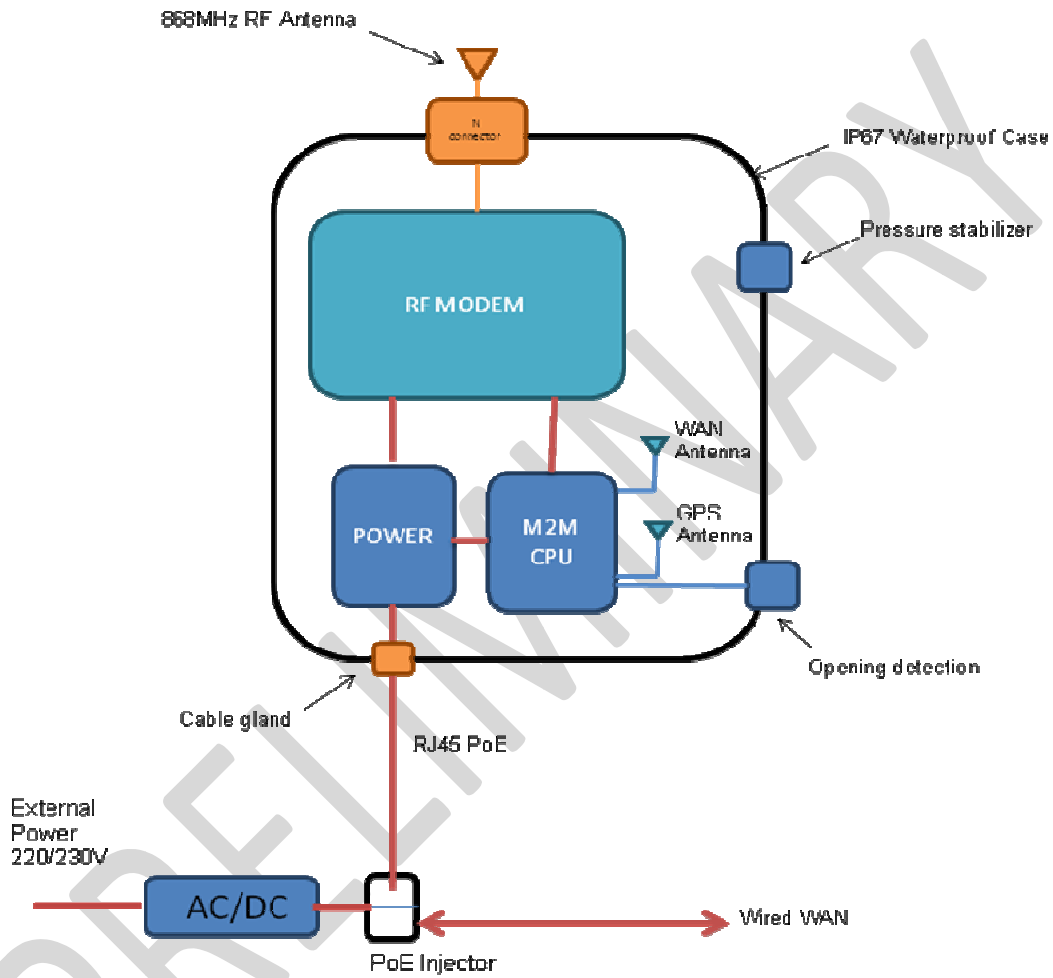


Figure 2: LoRaIoT Station Block diagram

Classification level	1 - Internal use only	2 – Confidential	3 - Confidential limited
This document is owned by KLK and can not be distributed, used and/or reproduced without KERLINK written authorization.			Page 8/25

5.2 Mechanical implementation

The LoRaIoT Station is based on a high impact resistant polycarbonate wall mounting cabinet that withstand harsh industrial and outdoor environments.

It offers excellent flammability rating, good UV resistance and also good chemical resistance.

The dimensions are 231 mm x 125 mm x 60 mm. It is rated IP67.

The opening system is simple: clipping (screwing is optional)



Figure 3 : LoRaIoT Station casing - external view



Figure 4 : POE injector (example)

Classification level	1 - Internal use only	2 – Confidential	3 - Confidential limited
This document is owned by KLK and can not be distributed, used and/or reproduced without KERLINK written authorization.			Page 9/25



Figure 5 : LoRaloT Station casing - internal view (temporary image)

The LoRaloT Station is composed of:

- The enclosure itself including:
 - The casing (item 1)
 - 1 cable gland for RJ45 POE (item 2). The LoRaloT Station is delivered without RJ45 POE cable (Ethernet cable).
 - 1 N connector (item 3) to connect LoRa antenna
 - 1 pressure stabilizer for protection against condensation (item 4)
- LoRa RF antenna connection with N connector (item 5) and its cable
- A POE injector (item 7) and its power supply cable.
- The internal shielding (item 8)
- A mounting kit (item 6) designed to answer different installation configurations:
 - Pole mounting by U-bolt (delivered by default)
 - Wall mounting
 - Metallic strapping mounting (tube, pipe, flue...)

Classification level	1 - Internal use only	2 – Confidential	3 - Confidential limited
This document is owned by KLK and can not be distributed, used and/or reproduced without KERLINK written authorization.			Page 10/25

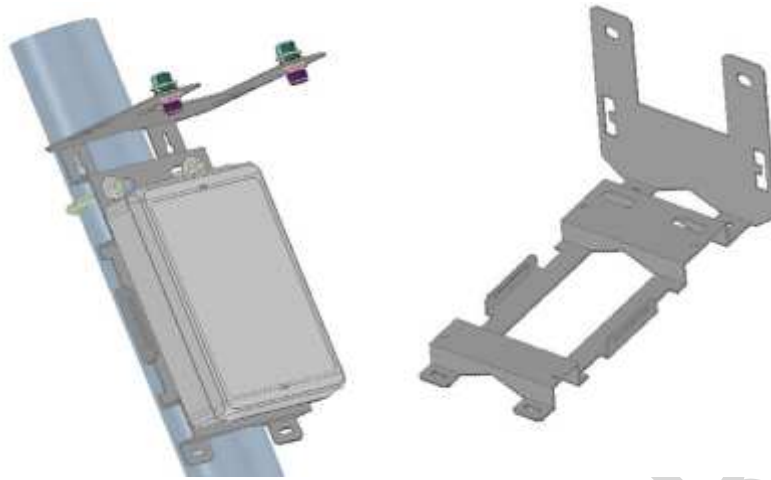


Figure 6 : Mounting kit

5.3 Stickers

The LoRaIoT Station has stickers placed inside the casing:

- A sticker on the door including LoRaIoT Station serial number, regulatory markings and electrical information (item 9)
- A white sticker explaining the LEDs behaviour (item 10)

PRELIMINARY

6 Installation procedure

6.1 Installation topology

6.1.1 Single station installation

With SIM Subscription

Figure 7 : Single station installation (with SIM)

Without SIM Subscription

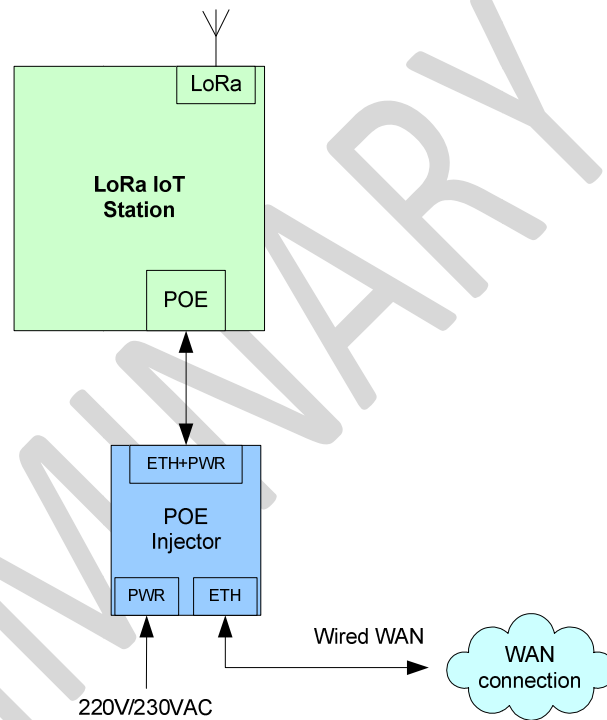


Figure 8 : Single station installation (No SIM)

6.1.2 Multi-station installation

6.1.2.1 With SIM Subscription

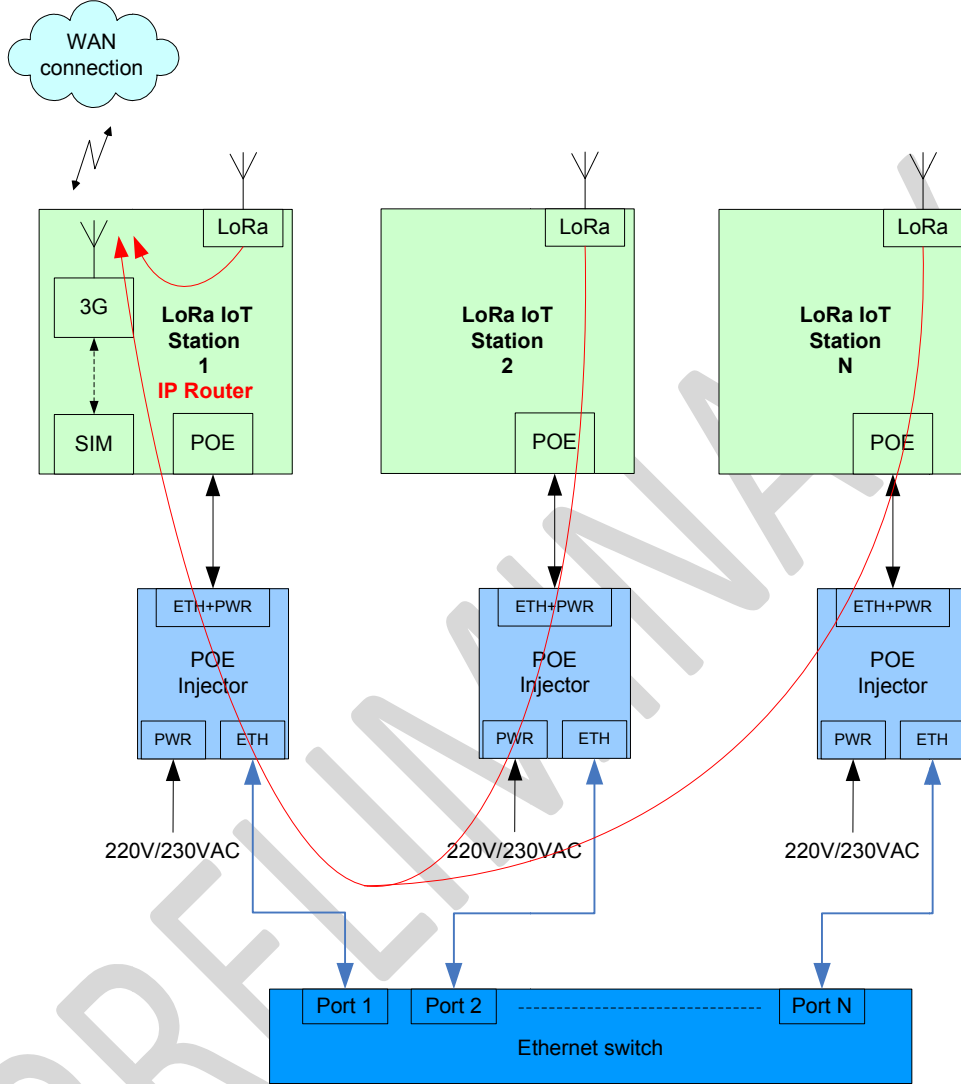


Figure 9 : Multi-station installation (with SIM)

6.1.2.2 Without SIM Subscription

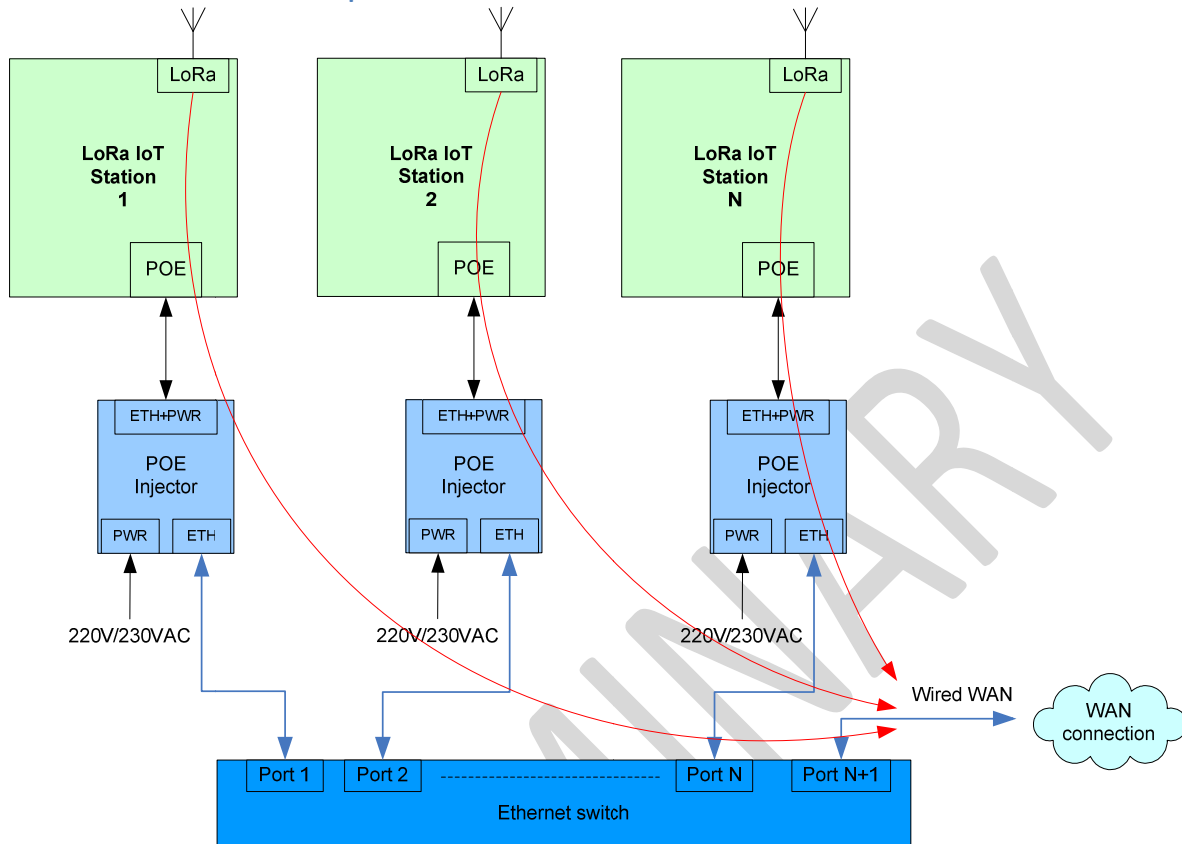


Figure 10 : Multi-station installation (No SIM)

 <p>Long Range IoT Station</p>	<p>Installation and Maintenance Manual</p>	<p>Reference:INSTALL_Long_Range_IoT_Station Version 0.3 Author Lénaïc Louvel Date 02/06/2014</p>
---	---	---

6.2 Electric distribution to the LoRaIoT Station

6.2.1 Power-Over-Ethernet (POE) power supply

The LoRaIoT Station is supplied through Ethernet cable: POE 48V class 0(Max: 15Watts)
The nominal current is about 70mA in Lora Rx mode with the GSM in a network attached mode.

Kerlink recommends a CAT6 SSTP standard Ethernet cable.
The maximum cable length is 100m.

On LoRaIoT Station side, the Ethernet cable must be firstly inserted through the cable gland. Then, the shield of the cable must be clamp like in the following picture to get a good earth shielding.
The internal wires have to be connected to the terminal block as described on the picture below:

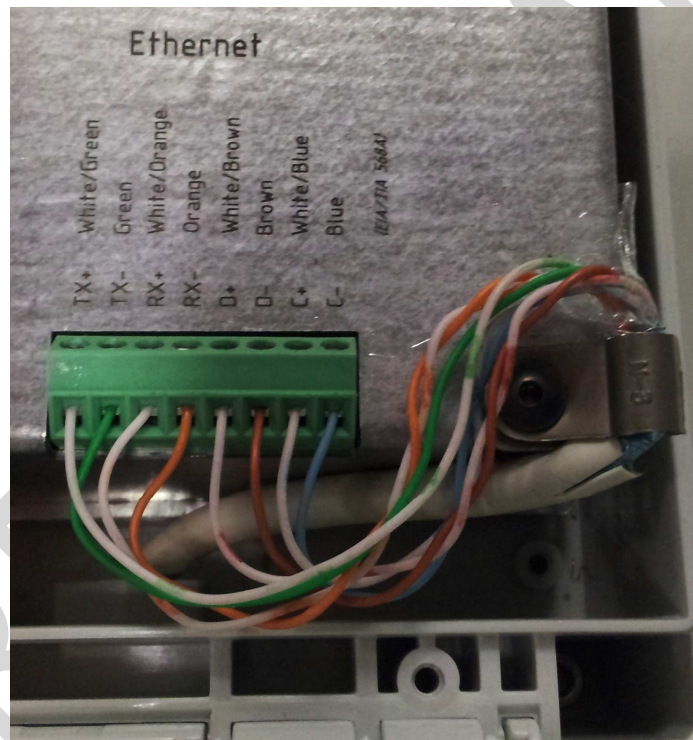


Figure 11 : Ethernet connection

The cable gland allows external cable diameter from 4mm to 8 mm.

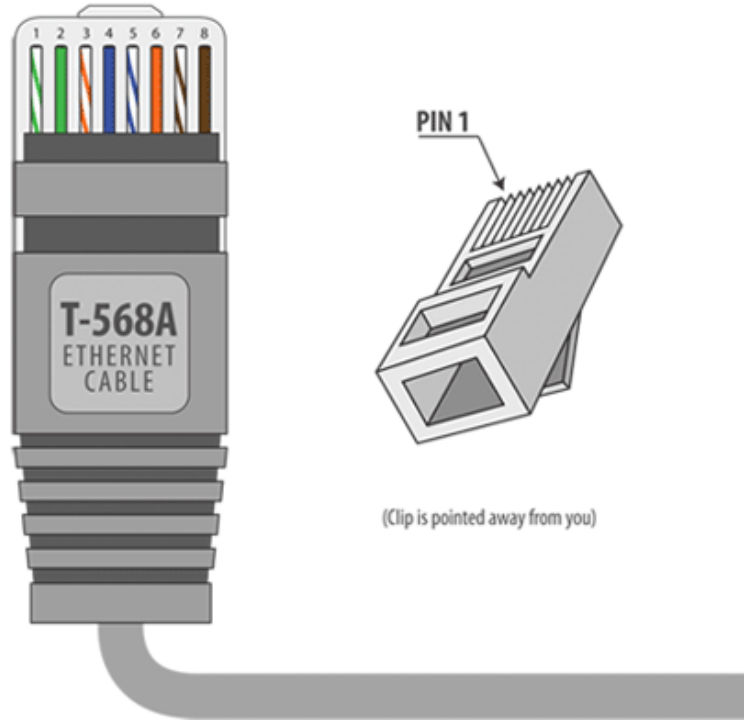
On the other side of the POE cable, RJ45 connector must be inserted into POE injector. This POE injector is connected to 230VAC.

The POE injector must be installed in accordance to its own specifications.

Classification level	1 - Internal use only	2 – Confidential	3 - Confidential limited
This document is owned by KLK and can not be distributed, used and/or reproduced without KERLINK written authorization.			Page 15/25

RJ-45 Plug

T-568A Straight-Through Ethernet Cable



6.2.2 Solar power supply

The LoRaIoT Station can be also supply with a DC power supply as a solar panel. The input voltage range is 11 to 30VDC.

The power supply must be qualified as a limited power source.

The maximum power is 13W.

The nominal current for a 12V power supply is about 250mA in Lora Rx Mode with the GSM in a network attached mode.

After insertion through the cable gland, a 2-wire cable can be connected to the dedicated terminal block as described on the figure below:

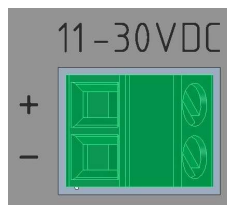


Figure 12 : DC power supply connection (temporary image)

The cable gland allows external cable diameter from 4mm to 8 mm.

Classification level	1 - Internal use only	2 – Confidential	3 - Confidential limited
This document is owned by KLK and can not be distributed, used and/or reproduced without KERLINK written authorization.			Page 16/25

6.3 Mounting of the enclosure

6.3.1 GPS and GSM considerations

The Wirgrid Station owns a GPS and a GSM integrated solutions. Those both technologies need to install the product in an open environment to get acceptable performances.

6.3.2 General considerations

The LoRaloT Station must be mounted on any concrete pedestal, concrete wall or any non-flammable surface (UL94-V0).

It must not be mounted on a flammable surface.

The mounting kit delivered with the LoRaloT Station allows fixing the product in different ways.



Figure 13 : mounting kit dimensions

6.3.3 Pole mounting by U-bolt

By default, the LoRaloT Station is delivered with a U-bolt to be mounted on a pole of a maximum diameter of 60mm.

To fix the U-bolt, it is recommended to use nuts and washers provided in the mounting kit.

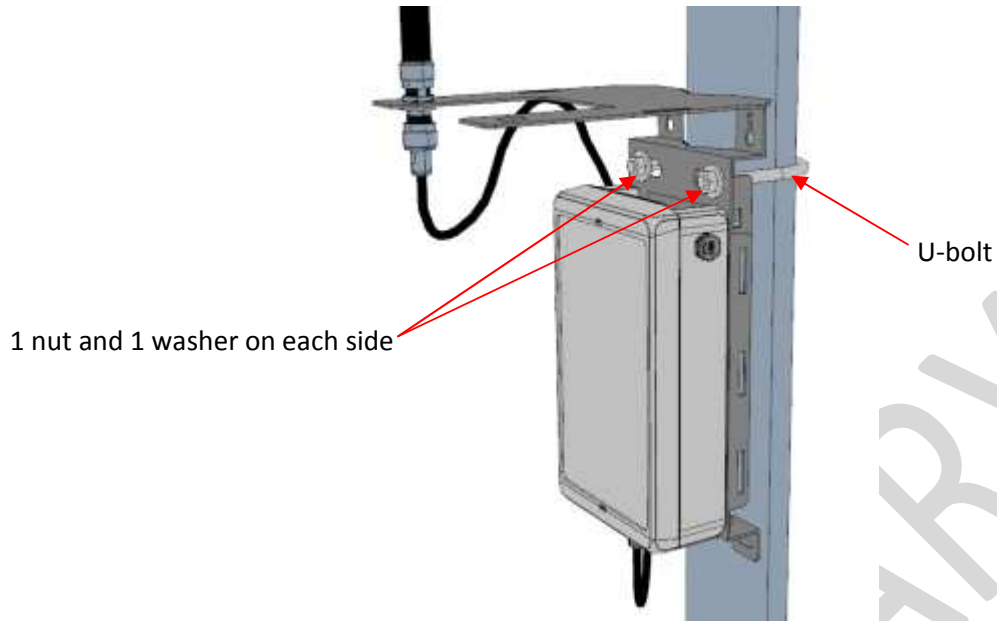


Figure 14 : Pole mount set on the enclosure



Figure 15 : Another view of the pole mounting using U-bolt (no pole represented)

6.3.4 Wall mounting

The LoRaIoT Station can be also mounted on a wall with M4 screws (not delivered with the mounting kit).

Classification level	1 - Internal use only	2 – Confidential	3 - Confidential limited
This document is owned by KLK and can not be distributed, used and/or reproduced without KERLINK written authorization.			Page 18/25

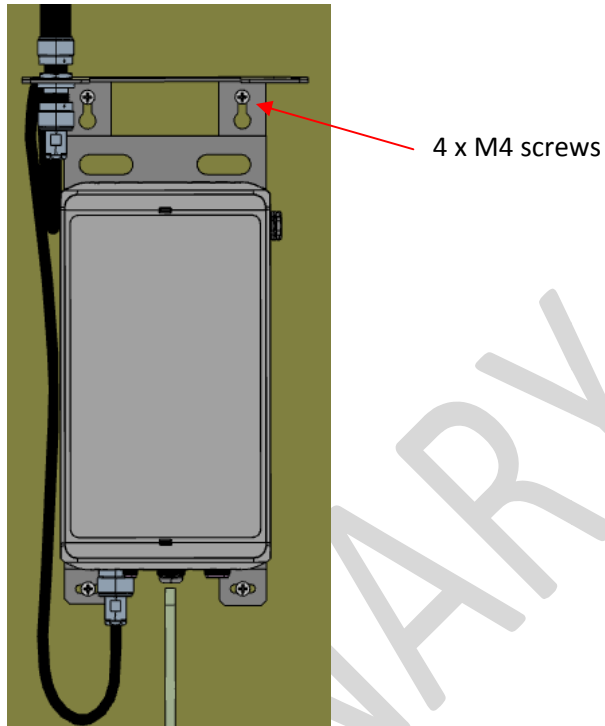


Figure 16 : Wall mount on the enclosure (front side)

6.3.5 Metallic strapping mounting

The LoRaIoT Station can be also mounted on a pole by strapping. The maximum acceptable width of the strapping is 25mm. It is recommended to use 2 metallic strappings as described on the figure below:

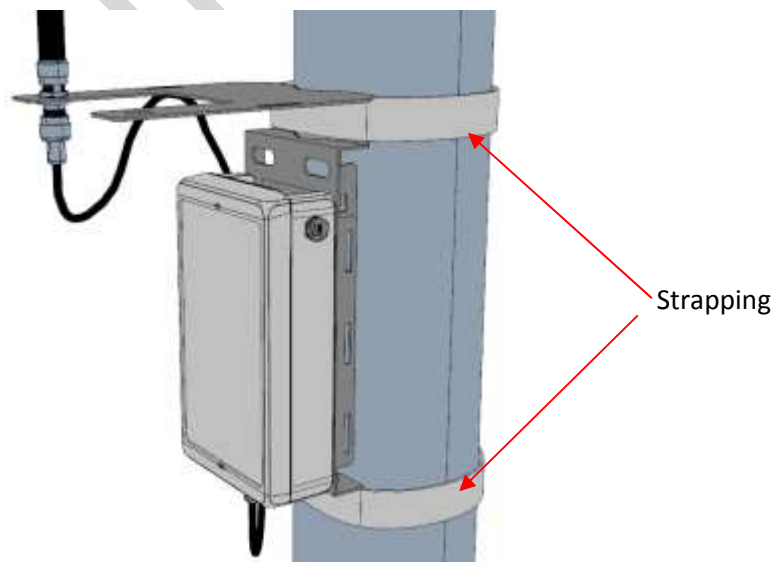


Figure 17 : Pole mount set using strapping

Classification level	1 - Internal use only	2 – Confidential	3 - Confidential limited
This document is owned by KLK and can not be distributed, used and/or reproduced without KERLINK written authorization.			Page 19/25



Figure 18 : Another view of the pole mounting using strapping (no pole represented)

6.4 Setting connections

6.4.1 Ethernet connection

Before connecting the Ethernet wires, ensure that the POE injector is not connected to 230VAC. The Ethernet wires must be connected as described in §6.2.1.

6.4.2 LoRa RF Antenna connection

LoRaIoT Station is delivered with a 868MHz antenna: specifications to be added.

First, fix the RF antenna on the mounting set:

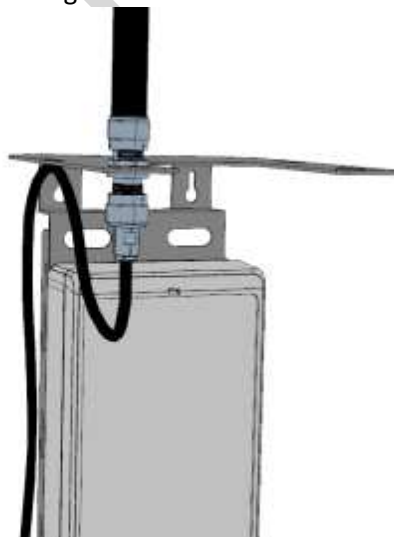


Figure 19 : attachment of the antenna on the mounting set

Classification level	1 - Internal use only	2 – Confidential	3 - Confidential limited
This document is owned by KLK and can not be distributed, used and/or reproduced without KERLINK written authorization.			Page 20/25

Once the RF antenna is fixed, connect the N connector of the antenna cable on the connector based on the bottom of the casing as described on the figure below:

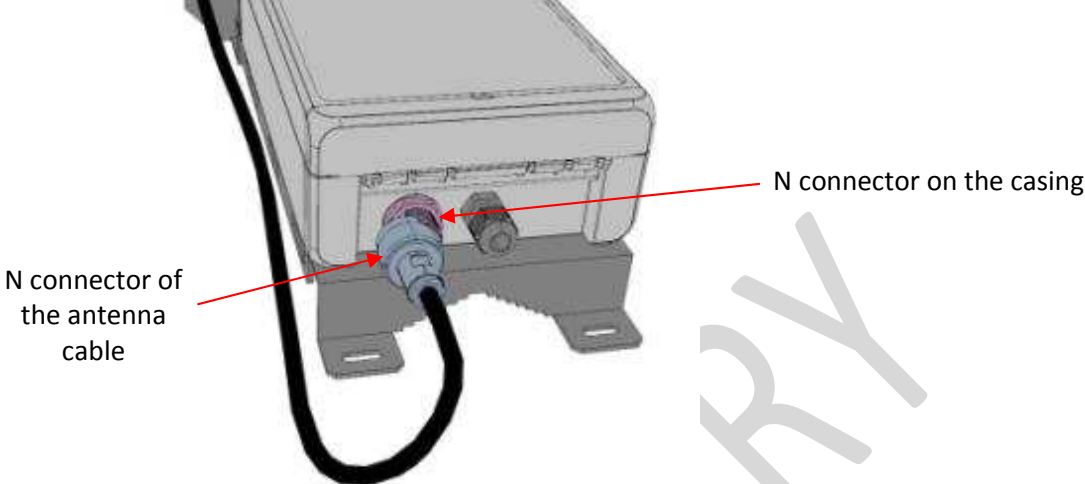


Figure 20 : connection of LoRa RF antenna (bottom view)

To improve the durability of the RF connections against environmental aggression (moisture, pollution, ...), Kerlink recommends to recover connectors with an insulating tape like the reference 130C from 3M.

To fix the antenna cable, it is possible to fix it with cable clamp, using spaces provided for this purpose:

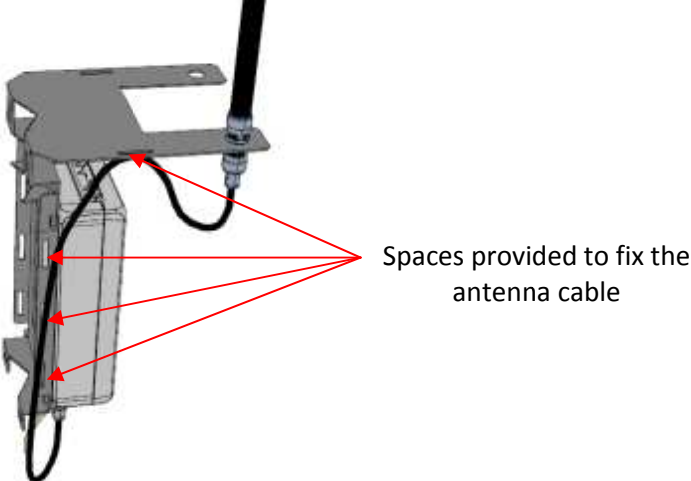


Figure 21 : attachment of the RF antenna

It is possible to order other antenna as an option: **specifications to be added.**

 <p>Long Range IoT Station</p>	<p>Installation and Maintenance Manual</p>	<p>Reference:INSTALL_Long_Range_IoT_Station Version 0.3 Author Lénaïc Louvel Date 02/06/2014</p>
---	---	---

6.5 Commissioning

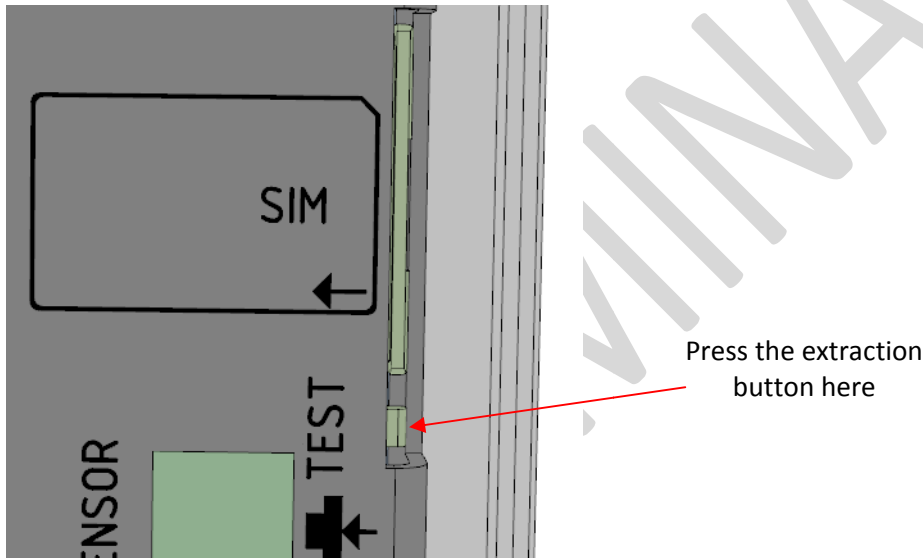
6.5.1 SIM card

The SIM card is mandatory to establish the 3G/GPRS communications.

Before inserting the SIM card, pay attention that the LoRaIoT Station is unpowered by checking the 2 LEDs PWR are OFF.

Then, to insert a SIM card in the Access Point:

- Open the LoRaIoT Station casing
- Open the internal door of the cabinet
- Then, you can remove the SIM card holder of the Lora IoT Station by pressing with a little screwdriver, the extraction button (as shown below)
- Place the SIM card in the SIM card holder
- Insert carefully the SIM card holder with the SIM card in the LoRaIoT Station



In case of replacement of the SIM card, the power supply must be firstly switched off by disconnecting Ethernet wires or disconnecting the POE injector. For few seconds, the LoRaIoT Station is still powered-on due to the internal backup battery. Wait and check the 2 LEDs PWR are switched off before extract the SIM card.

After inserting the new SIM card as described above, the Lora IoT Station can be re-powered on.

In case of change of mobile operator, APN and login/password must be updated. For more details, contact Kerlinkat support@kerlink.fr.

6.5.2 Power on

Once the RF antenna and the Ethernet wires are connected and the SIM card is inserted, the Lora IoT Station can be powered on.

To POWER ON the LoRaIoT Station, connect the POE injector on the 230VAC main power supply.

Classification level	1 - Internal use only	2 – Confidential	3 - Confidentiallimited
This document is owned by KLK and can not be distributed, used and/or reproduced without KERLINK written authorization.			Page 22/25

6.5.3 Functional check

To ensure the LoRaIoT Station is started up, check the 2 PWR LEDs: they should be switched ON. After some seconds, the LEDs switch off.

Then, to check and analyse the status of the Lora IoT Station, the TEST button must be pressed briefly in order to activate the LEDs functionality during 1 minute. This operation can be repeated indefinitely.

Status of the Lora IoT Station:

Name	Color	Mode	Details
PWR (Station)	Green	Continuous	Station power indicator
PWR (Modem)	Green	Continuous	Modem power indicator
GSM1	Green	Continuous	GSM quality level Most Significant Bit
GSM2	Green	Continuous	GSM quality level Least Significant Bit
WAN	Green	Continuous	WAN IT System connection OK

WAN quality level :

GSM1	GSM2	Status
0	0	SIM Card error
0	1	No network connection
1	0	RSSI Level < 17
1	1	RSSI Level >18

The behaviour of the other LEDs depends on the application software downloaded in the LoRaIoT Station. Only Station LEDs (WAN, MOD1 and MOD2) can be controlled by the application.

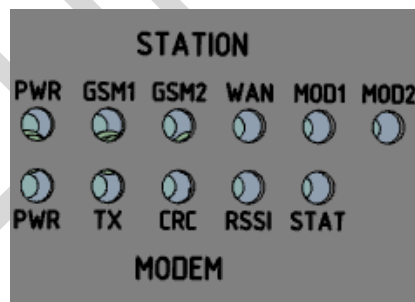


Figure 22 : LEDs indicators

7 Maintenance of the Access point

7.1 Simple checks

7.1.1 LoRaIoT Station enclosure

Check the robustness of the installation:

- Screwing of the LoRaIoT Station on the mounting set
- Screwing of the mounting set (depends on the configuration)

Check the Ingress Protection of the enclosure:

- No trace of water inside the enclosure
- Tightening of the cable gland
- Tightening of the pressure stabiliser
- PU gasket on the door

7.1.2 Cables

Check:

- The LoRa RF antenna N connectors are well fixed on the casing and on the mounting set.
- Screwing of Ethernet wires
- Ensure that the POE injector is correctly installed (RJ45 and power supply cable).

7.1.3 LED

Make sure the LoRaIoT Station is working properly according to LEDs indications

See §6.5.3.

7.2 Interfaces for debug or maintenance purposes

7.2.1 Proprietary debug interface

The LoRa IOT Station has a proprietary debug interface:

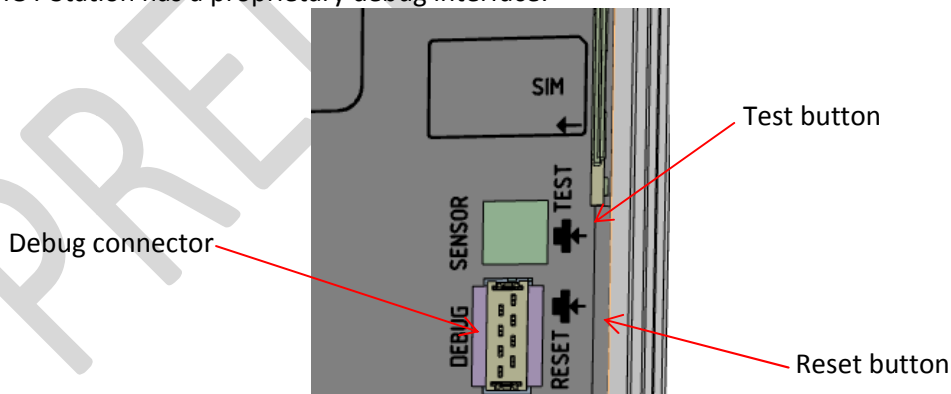


Figure 23: Proprietary debug interface of the LoRaIoT Station

This debug interface is intended to be used by authorized and qualified personnel only.

Be careful: Only specific equipment developed by Kerlink must be connected to this interface.

7.2.2 USB and Ethernet interface

Classification level	1 - Internal use only	2 – Confidential	3 - Confidential limited
This document is owned by KLK and can not be distributed, used and/or reproduced without KERLINK written authorization.			Page 24/25

By using a USB/NET dongle, it is also possible to access to the debug interface of the LoRaIoT Station via the USB type A connector below:

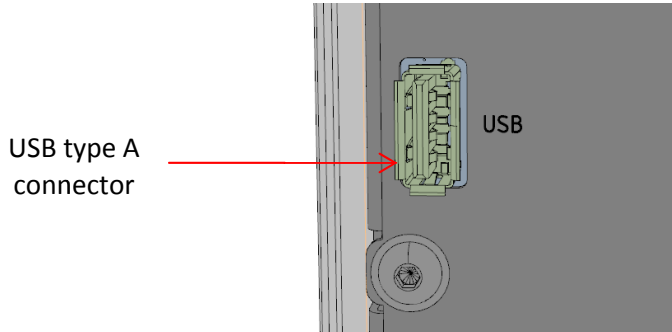


Figure 24 : USB connector of the LoRaIoT Station

This debug interface is intended to be used by authorized and qualified personnel only.

It is also possible to access to the debug interface by Ethernet connection by connecting directly to the POE injector or the Ethernet switch (depending on the installation topology).

Firmware update can be performed with a USB key.

7.2.3 TEST and RESET buttons

Test and reset button are small buttons present on the left side as shown in Figure 23. It is recommended to take precaution by using a small screw-driver to push one of the buttons.

RESET button is intended to reinitialize the LoRa IOT Station.

TEST button has 2 functions:

- Short Press : LEDs functionality is activated during 1 minute
- Long Press : Activation of an auto-test sequence defined by the application software

8 Kerlink support

The LoRaIoT Station must be installed and maintained by authorized and qualified personnel only. In case of defect or breakdown, make sure the above recommendations detailed in this document are met.

If an issue is not addressed in this document, contact Kerlink at support@kerlink.fr.

* * *

End of document