

# Wanesy<sup>®</sup> Management Plane

aka (WMP) will help you to solve your operational challenges: simplify your network deployment, maximize the Quality of Service, identify any need of network densification and optimize LoRa radio band usage.

## A large set of Key Performance Indicators and Management features

- **Gateway Monitoring**

- **System monitoring**

- Hardware monitoring (CPU, RAM, Disk, Temperature, door, installation time, location)
- Software monitoring (KerOS version, packages, licenses, logs)

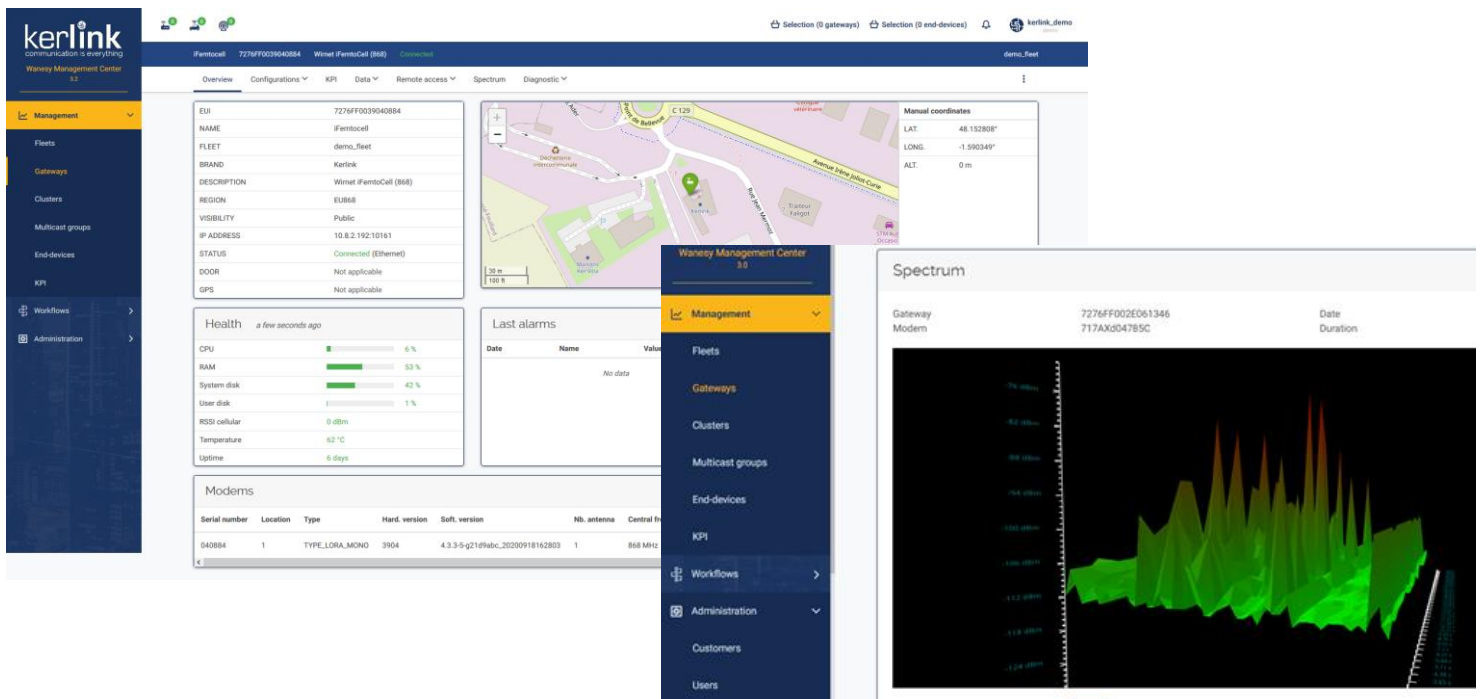
- **Backhaul monitoring and prioritization** (Ethernet, Wi-Fi, Cellular modem: delays, data counters, status up/down)

- **LoRa Radio Monitoring** (noise management with Spectrum analysis, channel occupancy, duty cycle)

- **Provisioning & Configuration:** New intuitive User Interface designed in co-creation with customers, unitary or massive import via CSV, workflows.

- **KPI**

- **on Gateway health** (Link Status, CPU, RAM, Temperature) **Uplink** (numbers, ratios, **DownLink** (numbers, ratios), **Network** (Ping)
- **on End-devices** when integrated with LNS : **Uplink, DownLink** (numbers, ratios)



- **Wanesy Management Plane (WMP) Monthly fee per Gw includes:**

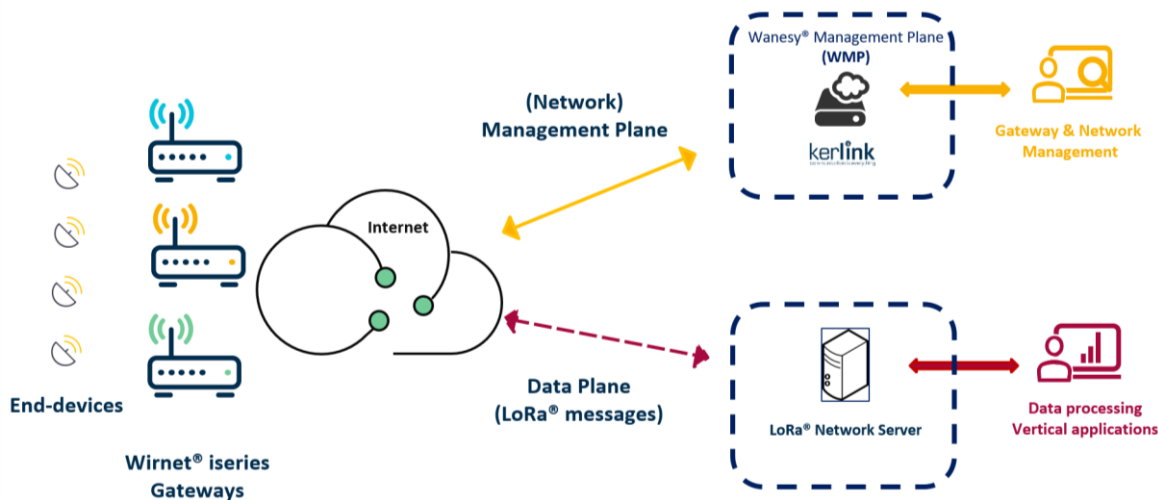
- ✓ Corrective and Evolutive Maintenance of Gateway Firmware
- ✓ Corrective and Evolutive Maintenance of Wanesy Management Plane
- ✓ SW Licence of Wanesy Management Plane
- ✓ Access to Kerlink Technical Support – Bronze Service-Level Agreement

## Can I use WMP with my actual « LoRa® Network Server » ?

**Yes!** As Kerlink has decided to split Management Plane (Gw management) and Data Plane (LNS).

**No operational impacts nor risks, no need to swap/migrate existing “LoRa® Network Server”.**

WMP is only using OpenVPN to setup a secure connection with the Wirnet® Gateways.



## How to simplify and decrease costs of « Operations »?

In order to simplify your operational tasks, Kerlink is changing the Maintenance paradigm of LoRaWAN networks, splitting Maintenance operations in 2 families : « **automated maintenance** » and « **interactive maintenance** ».

- « **Automated maintenance** » is covering Firmware updates, security updates and configuration updates that are done now, massively on fleets of Gw, in an automated way thanks to the brand new feature « **Zero Touch Maintenance** » (aka ZTM). ZTM feature is offered with all Kerlink Wirnet® iSeries Gateways;
- « **Interactive maintenance** » is covering operations that are done using a real-time remote connection to Gw: remote control, debug, GW status, Alarms, KPI and visualization via WebUI.  
**WMP** is the best tool, designed with Kerlink unique expertise on **LoRa® Gateways**, to connect in a centralized mode to the Gw in an « **Interactive** » way.

Kerlink is certified ISO9001: 2015 by AFNOR certification.  
The Quality Management System gives high priority to Customer satisfaction and progress implementation.



**kerlink**  
communication is everything

[sales@kerlink.fr](mailto:sales@kerlink.fr)

+ 33 2 99 12 29 00

1 rue Jacqueline Auriol  
35235 Thorigné-Fouillard  
France