

## Quick Start Guide Wirnet® iZeptoCell Cellular



Online documents



KLK03549\_02  
Kerlink internal use only

## Step 2 : Setting Connections

2 possible modes of connection are possible:

### 3.1 Power supply through multi-blade wall adapter

ID	Connections possibilities	Comments
1		Power supply via the multi-blade adapter

### 3.2 Power supply through USB cable

2		Power supply via USB
---	--	----------------------

### Cables installation recommendation to optimize performance



## Step 3 : Commissioning

To allow the good working of ZTP (Zero Touch Provisioning), please ensure sufficient LTE CatM, LTE Cat NB2 or GPRS cellular network coverage before powering up the product. For additional information to get signal strength, please refer to "Remote connection" chapter.

The Wirnet®iZeptoCell will be commissioned by ZTP (Zero Touch Provisioning), fully secured, very quick and totally automated feature that brings "Plug and Play". As long as LED1 and LED 2 are not green, keep plugged the Wirnet®iZeptoCell. When the Commissioning is achieved and successful when LED 1 and LED 2 are green. If you don't reach this status please refer "Need help ?" chapter at the end of this document. Indicative timings: to ensure the Wirnet®iZeptoCell is started up, check the behavior of the LED indicators:

- Boot takes around 1min 20s,
- Backhaul connection can take up to 20 min (depending on radio coverage quality)
- SW reset takes around 2 min.

LED	Specification
 LED 3: LoRa® RF activity (Uplink, Downlink)	<ul style="list-style-type: none"> <li>• Boot Red Fix ON</li> <li>• LoRa Data Reception (Uplink) → Green Blink</li> <li>• LoRa Data Emission (Downlink) → Red Blink</li> </ul>
 LED 2 : Backhaul status	<ul style="list-style-type: none"> <li>• Backhaul is disconnected → Red Fix ON</li> <li>• Backhaul connection → Green Blink</li> <li>• Backhaul is connected → Green Fix ON</li> </ul>
 LED 1 : Gateway status	<ul style="list-style-type: none"> <li>• Boot → Red Blink</li> <li>• Normal mode → Green Fix ON</li> <li>• Software Halt (Power down sequence) Red Blink</li> <li>• Software Update → Red Blink</li> </ul>

### Only used for troubleshooting

Short press the "Reset" button (<5s) to generate a software reset of the product. See LEDs behaviors in the dedicated LEDs table.  
Long press the "Reset" button (>5s) to halt the software of the gateway during 2mn. All LEDs are switched off in this state. This action is preconized before removing power supply to avoid any risk to alter memory.

The gateway is then reset after 2mn (back to normal functioning)



Gateway Identification Card

- Only use the product for its «normal condition of use» and with accessories or spare parts supplied by your reseller.
- The enclosure of the product must not be opened by customer
- Maintenance and repair must be carried out by qualified personnel authorized by the manufacturer

## Contents

Item	Wirnet iZeptoCell	Parts
1		x1 Wirnet®iZeptoCell with an internal embedded eSIM for LTE-M/2G connectivity. (no physical SIM needed)
2		x1 Multi-blades power supply (North America, Europe, United Kingdom)
3		x1 USB-A cable extender

Kerlink could also provide the following accessories:

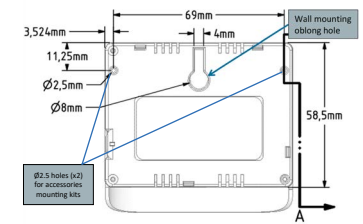
	x1 USB-A to USB-C cable
--	-------------------------

## Step 1: Installation

### 2.1 Option 1: Casing wall fixing

Wall mounting is completed by using the oblong hole on the rear side. A 4mm diameter screw (M4) with countersunk flat head and an appropriate wall plug are recommended.

## Installation



Two non-threaded holes (2.5mm diameter, 6mm depth) could be also used for accessories mounting. Plastic screws with 3mm outside thread and 2.1mm core thread are recommended.

### 2.2 Option 2: double-sided adhesives

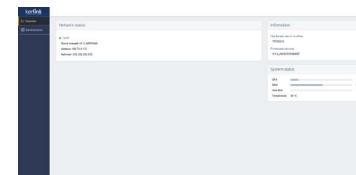
Double side tape Velcro stripes or double-sided adhesives foams (two parts of 25mm x 17mm are recommended on both side)



## Remote connection

- 1/ connect the Gateway to the laptop using USB cable.
  - 2/ once the connection is setup, you can access to a local web interface to perform some actions (Software update, gateway configuration, password modification...).
  - 3/ The generic syntax for web interface is `http://klk-zcel-<serial>/` Serial is the last digits of the gateway EUI (available on the gateway Identification Card) (ex: if gateway EUI is 7076FFyzz040001: `http://klk-zeth-040001/`)
- Default public credentials (must be changed for security reasons): Login: admin
  - Default password: pwd4admin

For security reasons, it is strongly recommended to change the default passwords before going in production mode.



Nota Bene : Signal strength in the GSM part of "Network status" must be "medium" or "good".  
If "Signal strength" is "bad", please install the Gateway to a proper location with a better coverage.

## Need help?

• For its customers, Kerlink is providing a Wiki on-line access where it can be found a comprehensive set of documents and technical information. It can be accessed here: <http://wikikerlink.fr/>

o If you don't have yet your Wiki login/password, please request them to [support@kerlink.com](mailto:support@kerlink.com) (note that the "EUI" of one of your products will be

o How to find the EUI"? Please look at the Wirnet®iZeptoCell sticker placed on the top side of the case and scan the QR code.



• For any Warranty or Maintenance related request (Trouble shooting, help ...)

o If purchased from a Distributor, please contact the distributor directly for Level1 support.  
o If purchased from Kerlink directly, please open an "Assistance Request" via our ticketing tool called OTRS (Open-source Ticket Request System)

If you don't have yet your OTRS login/password, please request them to [support@kerlink.com](mailto:support@kerlink.com) (note that the Product Id or any serial number of one of your products will be required).  
Access to Kerlink "Technical Support team" for Maintenance Services is conditioned to a valid Maintenance contract.

• For additional information or if you need any assistance to use the product, please contact your reseller. You can also find more information here: <https://www.kerlink.com/customer-support/>